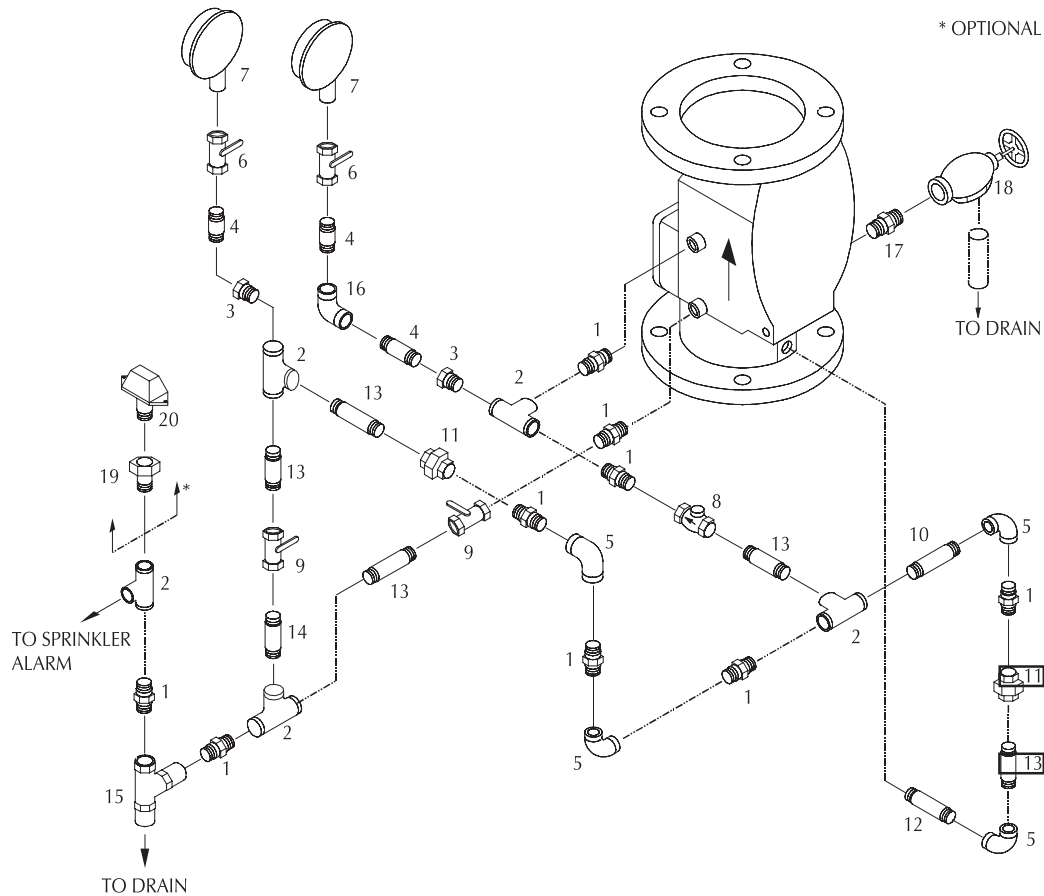


Shield - Constant Pressure Trim for Alarm Valve 80 NB



PART LIST

ITEM NO.	CODE	DESCRIPTION	QTY.	SIZE
1	9366	HEX NIPPLE	9	3/4"
2	9419	TEE	5	3/4"
3	9420	REDUCING BUSH	2	3/4" X 1/4"
4	9395	PIPE NIPPLE	3	1/4" X 110 mm LG
5	9377	ELBOW	4	3/4"
6	9477	GAUGE VALVE	2	1/4"
7	9456	PRESSURE GAUGE	2	1/4"
8	9421	SWING CHECK VALVE	1	3/4"
9	9425	BALL VALVE	2	3/4"
10	9406	PIPE NIPPLE	1	3/4" X 100 mm LG
11	9371	UNION	2	3/4"

ITEM NO.	CODE	DESCRIPTION	QTY.	SIZE
12	9443	PIPE NIPPLE	1	3/4" X 120 mm LG
13	9426	PIPE NIPPLE	5	3/4" X 60 mm LG
14	9406	PIPE NIPPLE	1	3/4" X 100 mm LG
15	1028	RESTRICTION NOZZLE ASSY	1	-
16	9374	ELBOW	1	1/4"
17	9429	HEX NIPPLE	1	1 1/4"
18	9392	ANGLE VALVE	1	1 1/4"
19	9437	REDUCING BUSH (optional)	1	3/4" X 1/2"
20	-	PRESSURE SWITCH (optional)	1	1/2" END CONNECTION

Shield/2005 Shield reserves the right to change the contents without notice.

