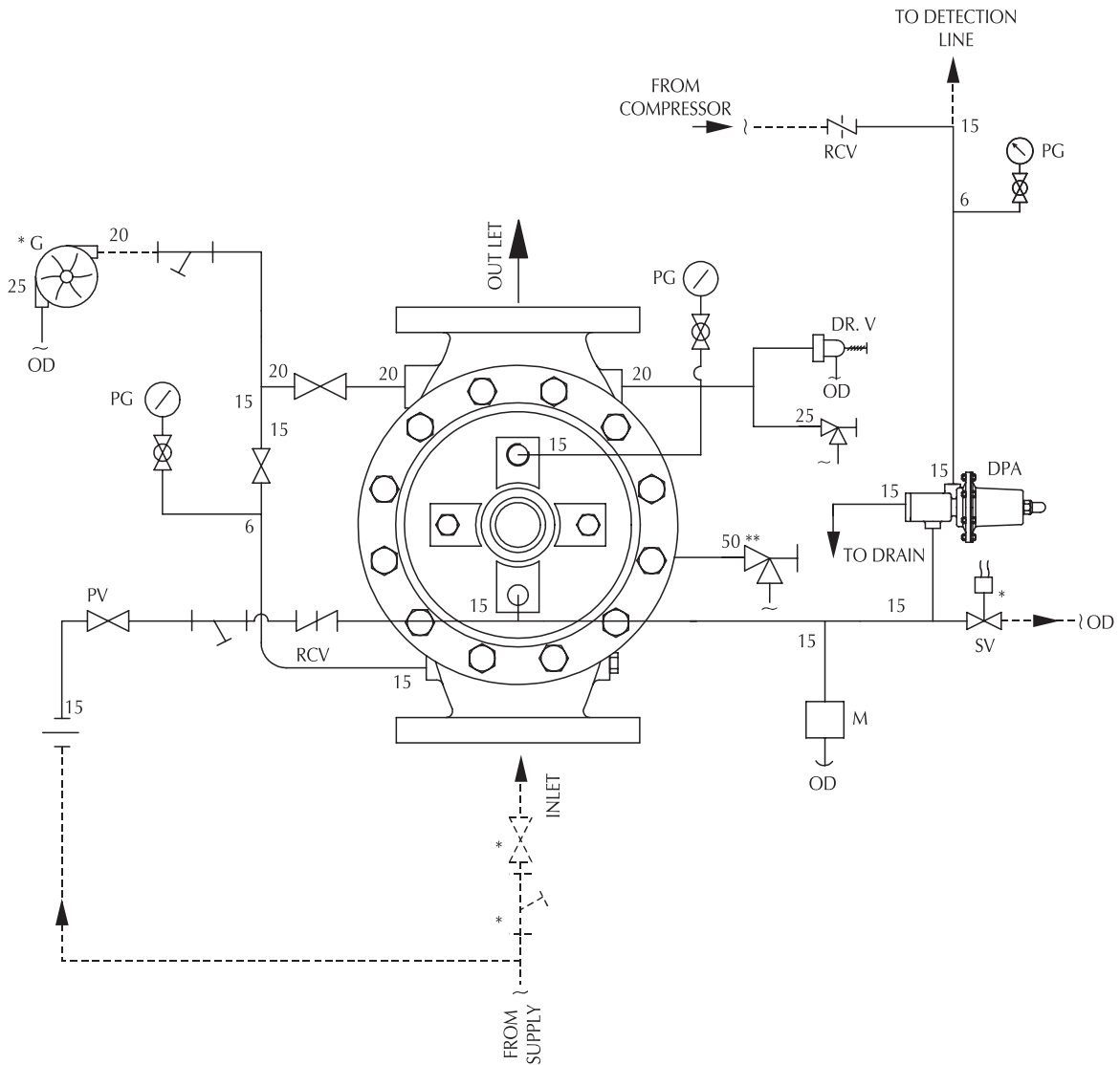


Shield - Electric & Pneumatic Release Trim - Schematic Deluge Valve 150 / 100 / 80 NB Vertical Mounting SD-H



*** ABBREVIATION & SYMBOLS**

- D.V. - DELUGE VALVE
- M - EMERGENCY RELEASE STATION
- RCV - RESTRICTION CHECK VALVE
- S.V. - SOLENOID VALVE
- PG - PRESSURE GAUGE
- G - SPRINKLER ALARM (WWG)
- OD - OPEN DRAIN
- DR.V - DRIP VALVE
- PV - PRIMING VALVE
- DPA - DRY PILOT ACTUATOR

- NON RETURN VALVE
- VALVE
- GAUGE VALVE
- STRAINER
- ANGLE VALVE
- UNION
- - BY USER
- * - OPTIONAL
- ** - 32 NB FOR 80 NB D.V.



Shield/2005 - Shield reserves the right to change the contents without notice.