



Shield - Wall Type Indicator Post

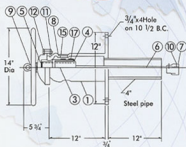
UL Listed. **FM** Approved.

Model: SD800W

The SD 800W Wall Type Indicator Post is used when a valve is installed behind a wall. The wall flange of the wall type indicator post is tapped for 4" schedule 40 steel pipe (Furnished by Customer) which extends through the wall.

Materials List

No.	Description	Material	Specification
1	Body	Cast Iron	ASTM A126-B
2	Handwheel	Cast Iron	ASTM A126-B
3	Operating Stem	Cast Bronze	ASTM B-62
4	Target Frame	Cast Bronze	ASTM B-62
5	Retaining Ring	Steel	SAE 1065-1090
6	Extension Rod	Mild Steel	ASTM A105-80
7	Socket	Cast Iron	ASTM A126-B
8	Gasket	Rubber	Commercial
9	Washer	Steel	Commercial
10	Cotter Pin	Brass	ASTM B-16
11	Nut	Steel	ASTM A307-B
12	Bolt	Steel	ASTM A307-B
13	Sign Plate	Aluminum	Commercial
14	Cap	Cast Iron	ASTM A126-B
15	Window Glass	Pleiglass	Commercial
16	Window Frame	Cast Bronze	ASTM B-62
17	Fixed Plate	Steel	Commercial



Dimension & Weights

Nominal size	Dimensions in Inches		Ext. Rod Length	Approx Net. Wt. (Lbs)
	A	B		
4"	9.56	13.63	3'	90 (ALL SIZES)
6"	13.69	18.00	3'	
8"	16.50	21.00	3'	
10"	19.88	24.63	3'	
12"	23.50	28.25	3'	

NOTE:

- Used for applications where a valve is installed behind a wall.
- The wall flange of the wall type Indicator Post is tapped for 4" schedule 40 steel pipe (furnished by customer) which extends through the wall.
- Handwheel operation.

