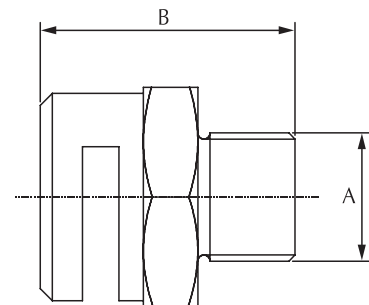


- **Model: SD-WC15 & SD-WC20 In Brass construction**
- **Model: SD-WC15S & SD-WC20S In S.S. construction**

TECHNICAL DATA:

RATED WORKING PRESSURE	: 12.3 Kg./Sq.Cm. (175 psi)
MINIMUM EFFECTIVE WORKING PRESSURE	: 1.4 Kg./Sq.Cm. (20psi)
END CONNECTION MATERIAL	: SD-WC 15 & SD-WC 15S with 1/2" BSPT (NPT optional) SD-WC 20 & SD-WC 20S with 3/4" BSPT (NPT optional)
K-FACTOR	: Model : SD-WC 15 / SD-WC 15S : K23, K30, K37, K45, K53 & K72 : Model : SD-WC 20 / SD-WC 20S : K98, K120, K140
APPROXIMATE WEIGHT	: Model SD-WC 15 - 0.180 Kg. : Model SD-WC 20 - 0.250 Kg.
FINISH	: Nickel chrome or Brass finish for SD-WC 15 & SD-WC 20 : Natural finish for SD-WC15S & SD-WC 20S
ORDERING INFORMATION	: Please specify Model, K factor and Finish

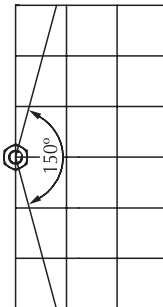
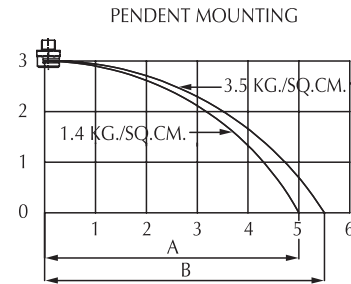
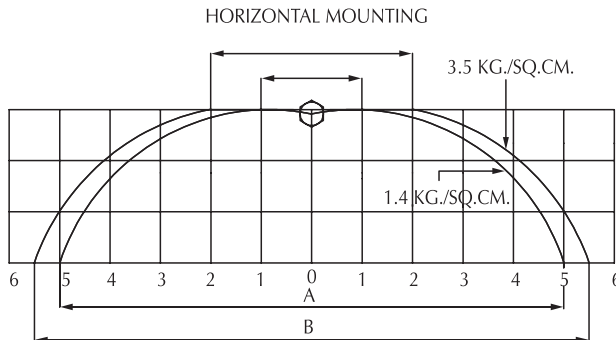


DIMENSION in millimetre (Approximate)

MODEL	A	B
SD-WC 15 & SD-WC 15S	1/2" BSPT	42
SD-WC 20 & SD-WC 20S	3/4" BSPT	46

Water Curtain Nozzle distributes water in a flat curtain extending all the way to the ground. Water Curtain Nozzle when mounted in pendent position acts as a window spray nozzle to protect interior walls, windows and other opening of the building which are affected by fire. The nozzles when mounted in horizontal position will flow towards ground, a flat water curtain is produced to segregate the area which is under fire. Water Curtain Nozzles are available in Brass and Stainless Steel construction with different flow rate.

SPRAY PATTERN



DIMENSION in meters (Approximate)

	K23	K30	K37	K45	K53	K72	K98	K120	K140
A	10.0	10.0	11.0	11.0	12.2	13.8	14.0	14.4	14.6
B	11.0	11.0	12.0	12.0	13.3	14.2	14.4	15.0	15.1
C	01.8	01.8	02.2	02.2	03.3	04.4	04.2	04.4	04.5
D	02.2	02.2	02.4	02.4	03.6	04.8	05.2	05.4	05.5

The distance between two nozzles should be 2.5 meters (maximum) for better performance. The distribution profile indicates approximate (maximum) trajectory and no specific density is implied through the above patterns.

DIMENSION in meters (Approximate)

	K23	K30	K37	K45	K53	K72	K98	K120	K140
A	5.0	5.0	5.3	5.3	5.5	5.9	6.2	6.4	6.6
B	5.5	5.5	5.8	5.8	6.0	6.2	6.3	6.5	6.8

The equipment presented in this bulletin is to be installed in accordance with the latest publication standards of NFPA, TAC or other similar organisations and also with the provision of government codes or ordinances wherever applicable.

The information provided by us are to the best of our knowledge and belief, and are general guidelines only. Site handling and installation control is beyond our reach. Hence we give no guarantee for result and take no liability for damages, loss or penalties whatsoever, resulting from our suggestion, information, recommendation or damages due to our product.

Product development is a continuous programme and hence the right to modify any specification without prior notice is reserved with the company.